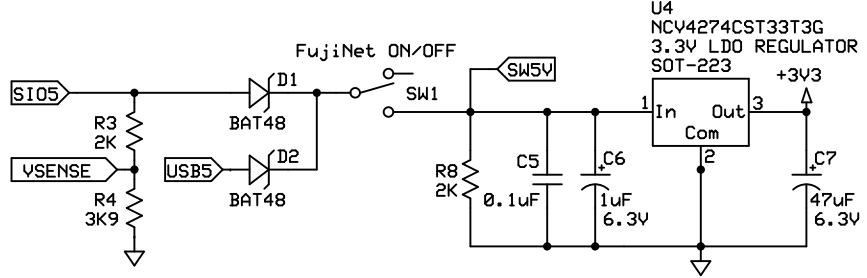
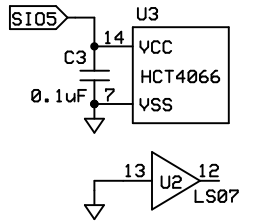
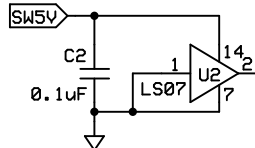


REMOVING POWER FROM U2 AND FROM U3's SWITCH ENABLE PINS DISCONNECTS SIO AND ESP32-WROVER I/O FROM EACHOTHER.

TO PROGRAM THE ESP32-WROVER PRESS BUTTON 'A' ONE TIME UPON POWERING UP FROM USB.



A Re-Designed Version of mozzwald's FujiNet Hardware for Expansion of the Atari 576NUC+ Motherboard.

ATARI 576NUC-FUJINET PROTO		
An AtariBits Production		
Michael St.Pierre	PROTOTYPE V1.2 March 9th 2021	NETWORKING